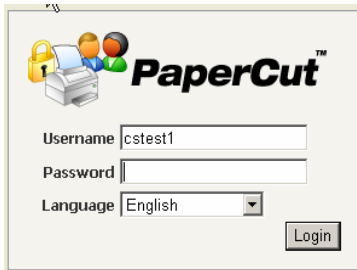
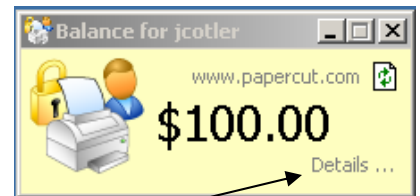


The School of Science (SoS) is pleased to announce the implementation of PaperCut™, print management software. In an effort to conserve valuable resources (i.e. trees, energy, etc.) the SoS has incorporated the use of this solution. PaperCut™ will help us monitor printing habits and discourage wasteful printing in the SoS. **There is no charge to students with the initial phase of this program.** Working in concert with the efforts of the student senate, Academic Affairs is committed to identifying meaningful ways to conserve energy at Siena. The use of this solution is an important step in lightening our footprint on earth and doing our part here at Siena.

Papercut™ has been initially adopted to collect data and produce information about how we are printing on campus. **Again, there will be no charges for printing in the School of Science this semester.** The SoS System Administrators will see the name of the file printed, how many jobs have been printed as well as the page counts for each job. The current implementation is not designed to restrict printing usage but rather bring forth an awareness of our printing habits and inspire creative alternatives. Faculty interested in printing alternatives using Blackboard may review potential solutions at: http://blackboardhelp.siena.edu/Faculty_Support/Go_Green!.php




This initiative is the result of the tireless and dedicated work of the SoS System Administrators; Ken Swarner and Eric Crossman.

A print quota has been assigned for all SoS faculty and students. When you use a public (lab) computer you will see your initial print quota of \$100. **This is not an actual charge but rather a starting print quota of 1,000 printed pages.** Each page printed will charge 10¢ against your allocated quota of \$100. When you login to your account you will see your balance as depicted in the screen sample to the right.

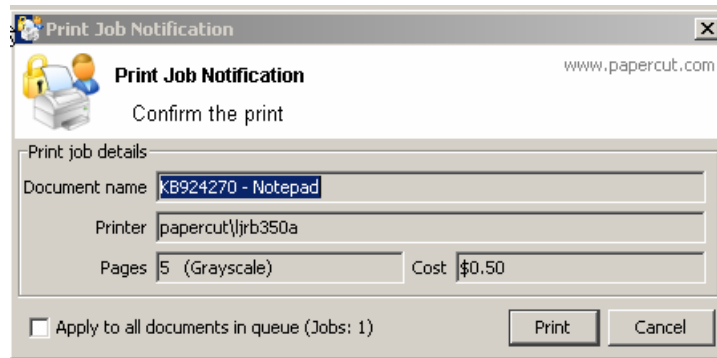


By clicking **Details...** and logging into the PaperCut™ (using your SoS credentials - username and password) you will see important information such as the **Environmental Impact** of your printing.

Environmental Impact

Trees	 0.053% of a tree since Dec 21, 2007
Carbon	 369 grams of carbon dioxide since Dec 21, 2007
Energy	 Equivalent to running a 60W bulb for 12.2 hours

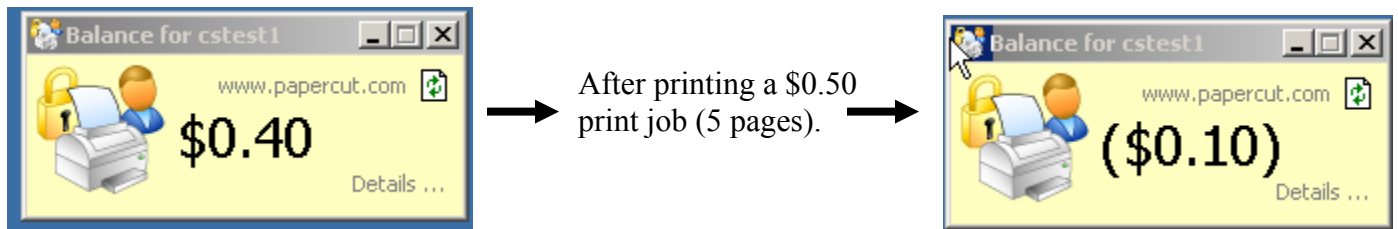
When you print you will see the **Print Job Notification** displayed below.



This notification is designed to promote awareness of printing and serve as a preventative measure for accidental excessive printing.

Negative Balance?? (You don't owe anything!)

If your balance falls below **\$0.00** you will see a negative balance denoted by the ().
You will not incur a charge. This is a monitoring and awareness instrument ONLY.



The information we will gather from this solution will help us identify ways we can become “greener” as a community. Thank you for helping us to make Siena a little greener!

Questions/Problems??

If you have a question or problem using PaperCut™ contact the Help Desk.

Help Desk Hours:

Monday – Thursday 8am – 8pm

Friday 8am – 4pm

Lower Level Library

782-8080

blackboardhelp@siena.edu